

System Based  
Access

# CBAP® V3



## Question Bank 90 Days Access



World's #1  
CBAP® Provider

LN MISHRA  
CBAP® CSM® CPRE®

### *Highlights*

*+500+ Questions*

*+Fully aligned to  
BABoK® V3*

*+1 Full length  
simulation*

**ADAPTIVE™**  
Think BA. Think Adaptive.

**IIBA®**  
Endorsed Education  
Provider

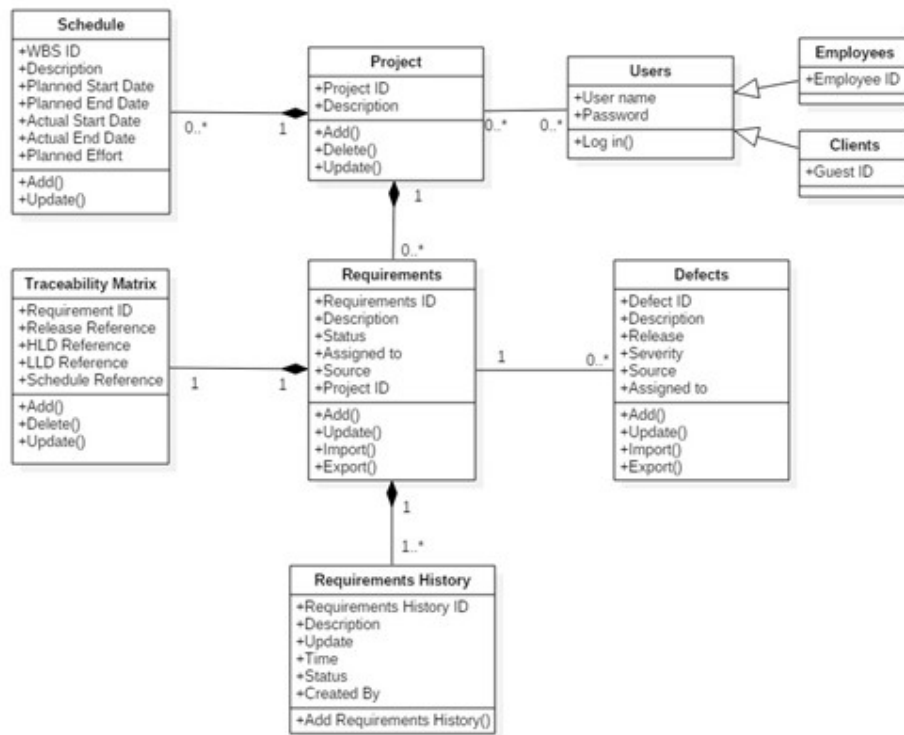
CBAP® v3  
Sample  
Questions  
Bank

1. Organization A provides weightages – Must have to get 10 points; discretionary items are given points ranging from one through nine. Vendor proposals are ranked against the criteria list. The vendor with the most points is selected. Techniques used during this process are
  - a. Stakeholder analysis, decision analysis, and key performance indicators.
  - b. Vendor assessment, key performance indicators, and acceptance/evaluation criteria definition.
  - c. Decision analysis, structured walkthrough, and functional decomposition.
  - d. Data analysis, structured walkthrough, and functional decomposition.
  
2. Stakeholder S provided the following requirement, “The system should be able to manage schedule”. The project glossary document does not describe the verb, “Manage”. It is possible that Term manage can be broken down further. The reason why requirement needs revision is because the requirement is
  - a. Not clear
  - b. Non atomic
  - c. Non testable
  - d. Not understandable
  
3. Business analyst A is business analyst for Project P. Business analyst A’s stakeholder has requested for a change to a baselined requirement. Business analyst A will
  - a. Reject the change as the requirement is already baselined.

- b. A know that the change is not useful, hence keep it on hold.
  - c. Follow the change request process as identified in the requirements management plan.
  - d. Tell the stakeholder that it is too late to accept any new change.
4. Business analyst A is developing a context diagram. The aspect that A does not need to include is \_\_\_\_\_.
- a. Detailed process logic.
  - b. Other system interfaces.
  - c. Users of the system.
  - d. Standards to be referenced.
5. Business analyst A is a business analyst in telecom domain. Telecom domain has strict standards to make sure systems can interconnect and work well. A should look for which one among following to develop requirement in this domain?
- a. Viewpoint
  - b. Traceability matrix
  - c. Requirements management plan
  - d. Business analysis plan

6. Requirements traceability can be established only at
  - a. The individual requirement level.
  - b. The model or package level.
  - c. The feature level.
  - d. Level considering costs and benefits.
  
7. Organization A is embarking on a project to implement an organization wide resource planning system. It would
  - a. Identify stakeholders once the implementation consultants are hired.
  - b. Identify stakeholders early in the project life cycle.
  - c. Focus on department heads for implementation.
  - d. Wait for implementation to progress half-way and then involve stakeholders.

8. ABC Software would like to automate its requirements management process. Following diagram models data structures and their relationships of the proposed system. Which of the following statement(s) concerning the diagram is / are true?



- a. For every requirement a Status can be added.
- b. Requirements have ID, Description, Status, Source and Category.
- c. Any requirement can have several histories stored in the system.
- d. Requirements engineer may create any number of requirements.

9. B is business analyst for Project Q. Project Q prioritized the requirements based on implementation effort. The basis for prioritization is \_\_\_\_\_
- a. Cost.
  - b. Benefit.
  - c. Requestor.
  - d. Type of the requirement.
10. Business Analyst A wants to design a requirements document in such a way that it is particularly well suited for the people who will work with the document in further phases of the development process. Which of the following is the correct combination of role and requirements characteristics?
- a. For the testers, the requirements have to be realizable.
  - b. For the developers, the requirements have to be easily changeable.
  - c. For all people involved, the requirements have to be consistent.
  - d. For the maintenance staff, the requirements have to be prioritization.

Answers to the test

#	Correct option	Explanation
1	B	Observe the need for vendor assessment
2	B	Term manage is non-atomic
3	C	This is the correct process to handle change requests
4	A	Since context models are high level diagrams
5	A	Viewpoints can help in gathering complete requirements
6	D	Traceability can indeed be established at any level
7	B	Always identify stakeholders early
8	A	Observe Status attribute for requirements.
9	A	Effort and cost are proportional
10	C	Requirements must be consistent to be implemented



Hungry for more questions?

Visit our eStore

**Explore the product here**

<http://adaptivevm01.cloudapp.net:5734/SuXeed/Register.aspx>